

**Transvenous and Percutaneous  
Biopsy Solutions**

Percutaneous  
Biopsy

## SABD™ Disposable Core Biopsy Systems SABD™ Coaxial Kits

Our SABD™ devices are designed to provide a lightweight, easy-to-use — yet powerful — core biopsy solution.

Fully disposable, the SABD™ device is the ideal choice when the bulk and weight of a reusable device may interfere with placement of the needle.

The fully exposed sample notch ensures the best possible specimen in virtually any soft tissue, as well as easy specimen removal when used for multiple biopsies at the same site.



Tissue Removal Swabs



US Biopsy® SABD™



Matched Introducer



Full Notch Exposure and Tru-Track™ Trocar Tip

## Echogenic Fine Needle Aspiration Sets

Our Fine Aspiration Needles are a fine gauge, two-part style design to sample cell, fluid or very small tissue specimens. The needle may be placed within a suspicious lesion using a variety of imaging technology such as ultrasound, CT and fluoroscopy. US Biopsy® offers FNAs in four popular needle tips and in several gauges and lengths.



CFN™ Chiba Tip



FFN™ Franseen Tip



WFN™ Westcott Tip



SFN™ Spinal Needle

## BLNS™ Stiffened Wire

## BLN™ Standard Wire

The Breast Lesion Localization Needles are a Kopans-style, fine-gauge, guide wire design. Designed to pinpoint the suspicious lesion within breast tissue, the needle may be placed using a variety of imaging technology, such as ultrasound, CT, and fluoroscopy.

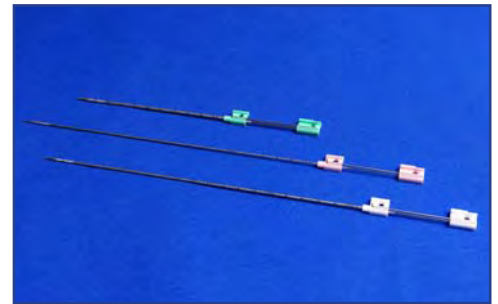


Standard Wire    Stiffened Wire

## Core Biopsy Replacement Needles

With US Biopsy, you always have a choice.

US Biopsy® manufactures two styles of core biopsy replacement needles to accommodate your preference of reusable biopsy device.



MCN™ Replacement Needles



CBN™ Replacement Needles

US Biopsy® Needle	Reusable Device
CBN™	US Biopsy® MBD-23
CBN™	Bard® Biopty®
CBN™	Pro-mag™ 2.2
MCN™	Bard® Magnum®

## MBD™ Double Action Core Biopsy System

When power and performance trump style.



US Biopsy® MBD-23™

[usbiopsy.com](http://usbiopsy.com) | tel 800-755-1671 | fax 317-736-0793 | [sales@usbiopsy.com](mailto:sales@usbiopsy.com)

\*\*Please see product directions for sterilization methods.

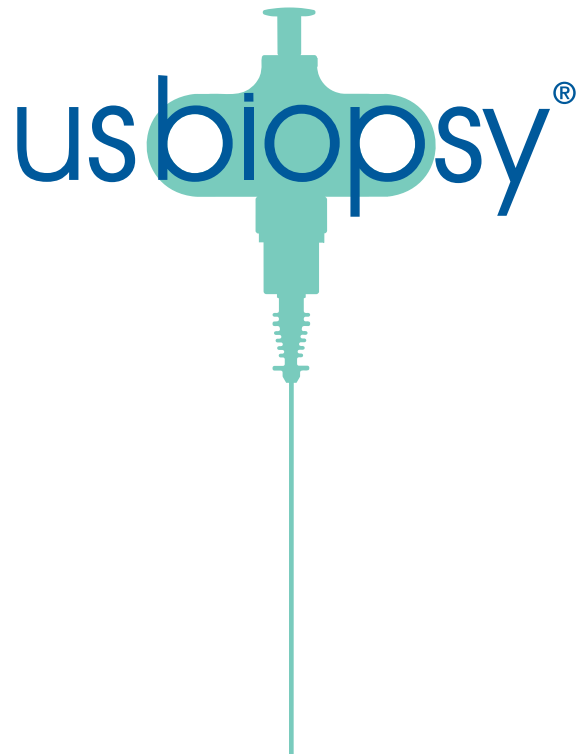
U.S. Patent Nos. 7,658,718, 7,309,317 and 6,918,881 and other patents pending.

BARD®, BIOPTY® and MAGNUM® are trademarks of C.R. BARD, Inc. PRO-MAG® is a trademark of Manan Medical Products, Inc. US Biopsy is not associated with C.R. Bard, Inc or Manan Medical Products, Inc. C.R. Bard, Inc. and Manan Medical Products, Inc. do not manufacture, license, or endorse US Biopsy® products.

## About US Biopsy

We are relentless about improving healthcare outcomes, the patient experience, safety and tissue specimen integrity. We live this every day through the Technology we design into our products and by practicing our Core Values: Integrity, Passion and Voice. Our “invented here” technology is covered by over 70 U.S. and International Patents, and our innovative products have been sold throughout the world under different labels for 20 years. We take your reaction to our products personally. Please contact us should you ever have a concern or compliment, and you will see what we mean.

[www.usbiopsy.com](http://www.usbiopsy.com)



US Biopsy

3049 Hudson Street

Franklin, Indiana 46131

[usbiopsy.com](http://usbiopsy.com) | tel 800-755-1671 | fax 317-736-0793 | [sales@usbiopsy.com](mailto:sales@usbiopsy.com)

# US Biopsy<sup>®</sup>

## SABD<sup>™</sup> Semi-automated Core Biopsy System

Provides more control and precision than fully automated designs.  
 Light weight design makes it easy to use.  
 Bevel or Trocar tip provides a choice when sampling dense tissue.



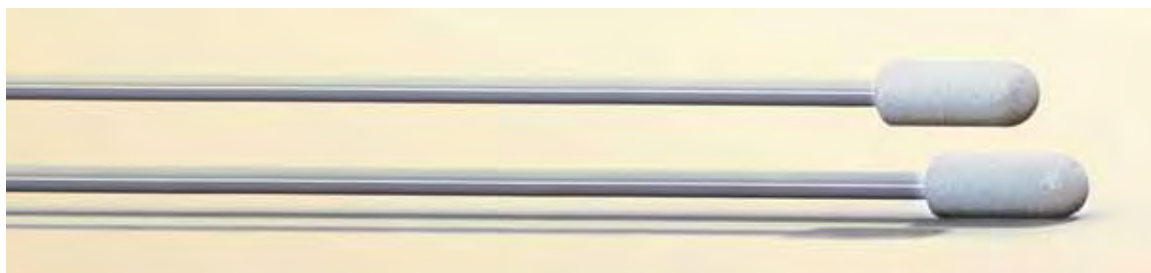
Full notch exposure for maximum sample and easy access to sample.  
 Tru-Track<sup>™</sup> Trocar design is sharper for less tissue trauma and tracks truer than bevels for more precise sampling.



Available in Coaxial Kits.  
 Matched introducers include depth marks.  
 Luer lock cap prevents stylet back up.

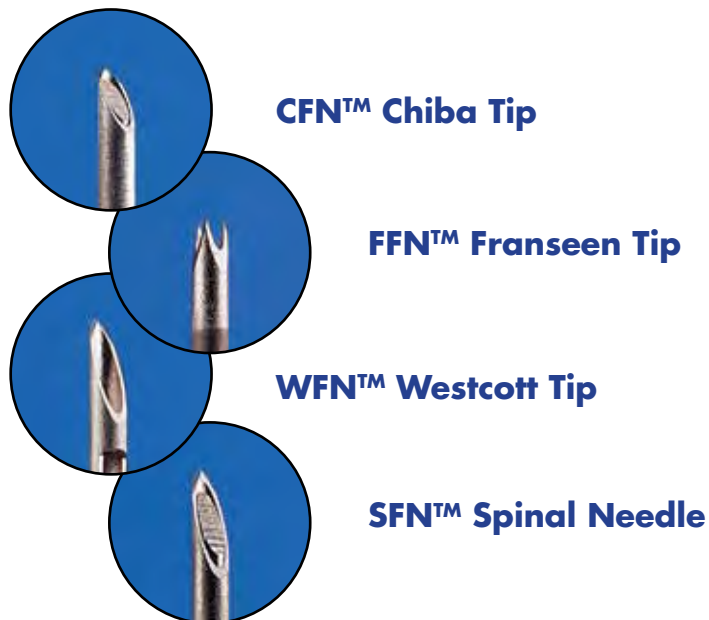
*NEW in 2010!*

US Biopsy<sup>®</sup> is offering Coaxial Kits with Tissue Removal Swabs (CT Kits)!  
 Provides safe and easy removal of specimen.  
 Four (4) sterile swabs included with each kit.



# US Biopsy<sup>®</sup>

## Fine Needle Aspiration Sets



Echogenic tip for enhanced visibility.

Clear polycarbonate hubs allow visual confirmation as specimens are drawn.

ISO color coded caps on stylets provide easy gauge identification.

Compatible with alcohol for alcohol ablation procedures.

Rounded hub design rolls easily between the forefinger and thumb.

Flat on hub provides tactile as well as visual indication of the needle level.

Etched depth marks for position confirmation.

